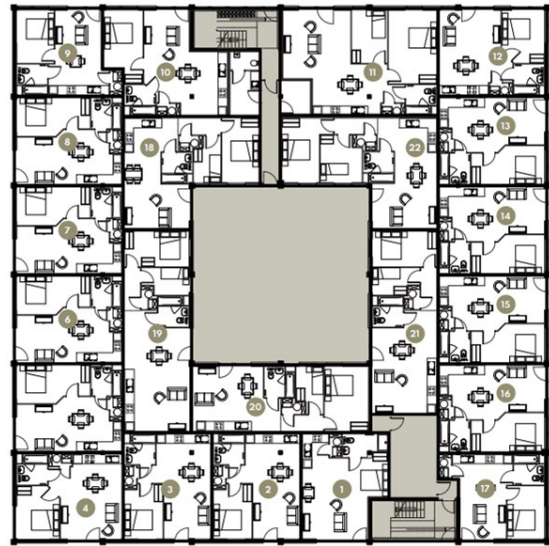




Springfield House | Ashwood Park | Ashwood Way | RG23 8BG

£1,060 PCM

Waterfords
Residential Sales & Lettings



Energy Efficiency Rating		
	Current	Potential
Very energy efficient - lower running costs		
(92 plus) A		
(81-91) B		
(69-80) C		
(55-68) D		
(39-54) E	56	56
(21-38) F		
(1-20) G		
Not energy efficient - higher running costs		
England & Wales	EU Directive 2002/91/EC	



Description

One-Bedroom Apartment to Let – Springfield House, Basingstoke

Available from March 2026, this one-bedroom apartment in Springfield House offers modern living in a convenient Basingstoke location. The property features a comfortable lounge, well-equipped kitchen, and a contemporary bathroom. Ideal for professionals or couples, it provides easy access to local amenities, transport links, and the town centre.

Key features

- One Bedroom Apartment to rent
- Water & electric separately metered
- Intergrated fridge freezer, dishwasher, ceramic hob & electric oven
- Rain shower & heated towel rail
- Minimum Term 12 Month Let
- Combination blinds partial or full black-out
- Lightning fast Fibre Broadband plus TV, telephone & Sky Q points.
- LED mirror with shaver socket & demister function
- Onsite parking included in the rent
- Available March 2026



39 The Hart Centre
Fleet
Hampshire
GU51 3LA
01252 623330

hampshirelettings@waterfords.co.uk
<https://www.waterfords.co.uk/>